

DEVELOPMENT GUIDE

ITHB IT Blueprint

Bandung , January 2013

2013-2018

This document is confidential and is intended solely for the use and information of ITHB businesses



INSTITUT
TEKNOLOGI
HARAPAN
BANGSA
School of Telematics

Table of Contents

- **ITHB Application Blueprint**
- ITHB Infrastructure Blueprint
- ITHB Hardware & Software Blueprint
- ITHB Organization Blueprint

ITHB Application Blueprint

ITHB Existing Key Applications
AS PER Oktober 2016

Web Base Applications (Portal)

No.	Name	Access
1.	SIA	Intranet
2.	Website ITHB	Intranet
3.	Perpustakaan	Internet
4.	Kbase	Intranet
5.	Elearning & Journal	Intranet
6.	Download ITHB	Intranet
7.	SMS Gateway	Intranet
8.	Payroll	Intranet

Standalone / Client Server Applications

No.	Name
1.	Staff & Teacher Attendance
2.	Accounting System

IT Applications Future Development

Web Base Applications (Portal)

No.	Name	Desc
1.	SIA	Custom development
2.	DAAK Service	Penanganan permintaan Service DAAK online
3.	Blog	Blog Institusi untuk Mahasiswa , Staf & Dosen
4.	Website per prodi	

ITHB Applications Blueprint : Standar and Policies

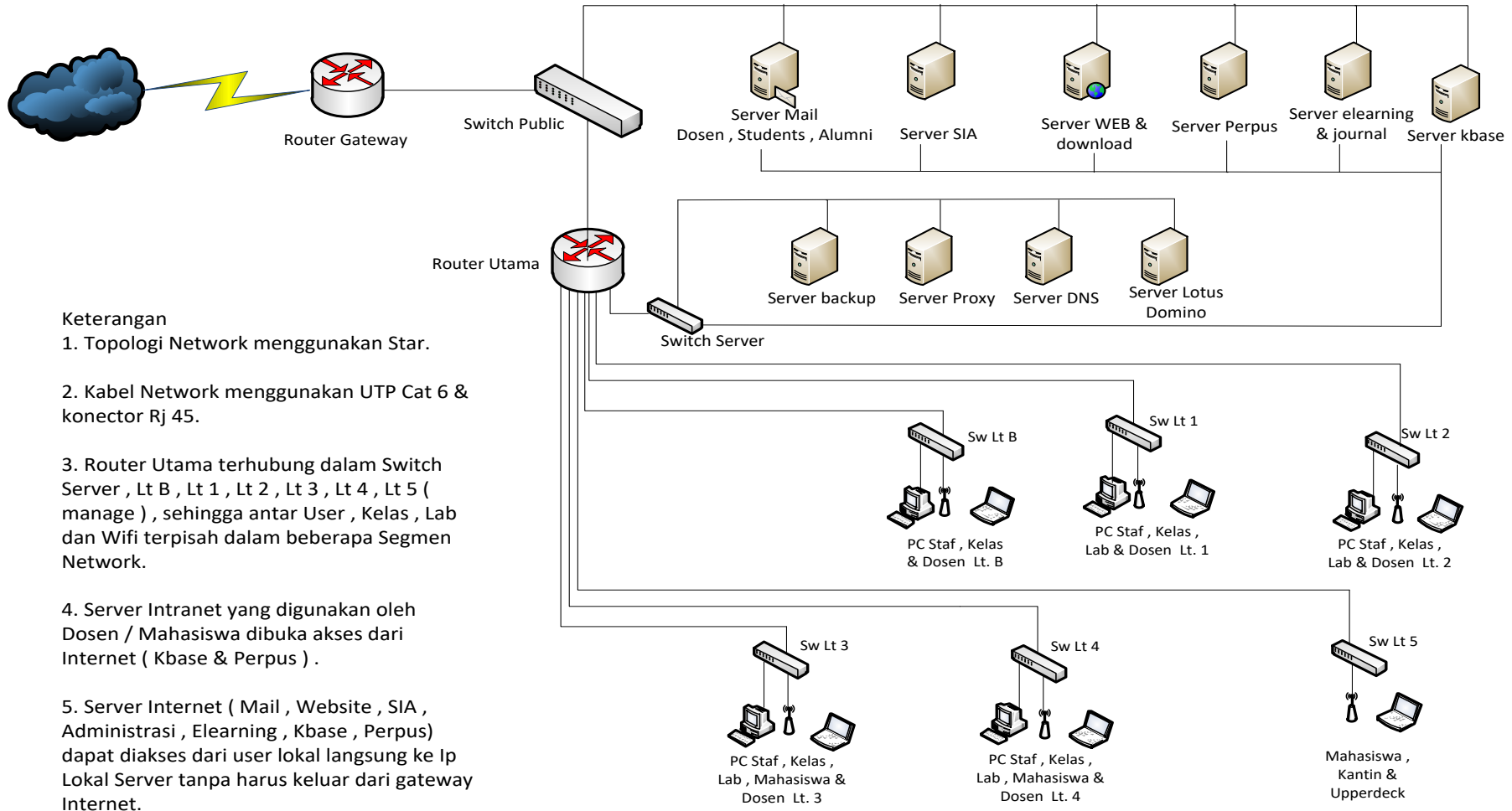
No	Item	Standard	Policies
1	Aplikasi arsitektur	Web base	
2	Programming	Php , java , .net	
3	Database	Mysql , Ms Sql	

Table of Contents

- ITHB Application Blueprint
- **ITHB Infrastructure Blueprint**
- ITHB Hardware & Software Blueprint
- ITHB Organization Blueprint

IT Infrastructure Blueprint

ITHB Infrastructure – Development (On Progress 2013)



Keterangan

1. Topologi Network menggunakan Star.
2. Kabel Network menggunakan UTP Cat 6 & konektor Rj 45.
3. Router Utama terhubung dalam Switch Server , Lt B , Lt 1 , Lt 2 , Lt 3 , Lt 4 , Lt 5 (manage) , sehingga antar User , Kelas , Lab dan Wifi terpisah dalam beberapa Segmen Network.
4. Server Intranet yang digunakan oleh Dosen / Mahasiswa dibuka akses dari Internet (Kbase & Perpus) .
5. Server Internet (Mail , Website , SIA , Administrasi , Elearning , Kbase , Perpus) dapat diakses dari user lokal langsung ke Ip Lokal Server tanpa harus keluar dari gateway Internet.

ITHB Infrastructure Blueprint : Standar and Policies

No	Item	Standard	Policies
Network			
1	Topologi	Star	
2	Kabel Network	UTP & FO	Tdk ada sambungan
Hardware			
3	Router Gateway	Mikrotik / Cisco	
4	Router Utama	Mikrotik / Cisco	Rb 1100
5	Switch Utama & Backbone	HP Tricom	Jenis Manageable
6	Switch sub / area	HP tricom / Dlink	Jenis unmanage
DataCenter			
7	Server	IBM	> X Type
8	Backup	Tape & online	Setiap hari
9	UPS	Eaton / APC	Line interaktif
10	Suhu AC	18 C	
Software			
11	Server Operating System	Linux Centos , Linux Suse , Windows Server	Versi terbaru
12	Email Sistem	Zimbra , Google Apps	
Security			
13	SSL Certificate	Rapid SSL	

Table of Contents

- ITHB Application Architecture
- ITHB Infrastructure Architecture
- **ITHB Hardware & Software Blueprint**
- ITHB Organization Blueprint

ITHB Hardware and Software Blueprint : Standar and Policies

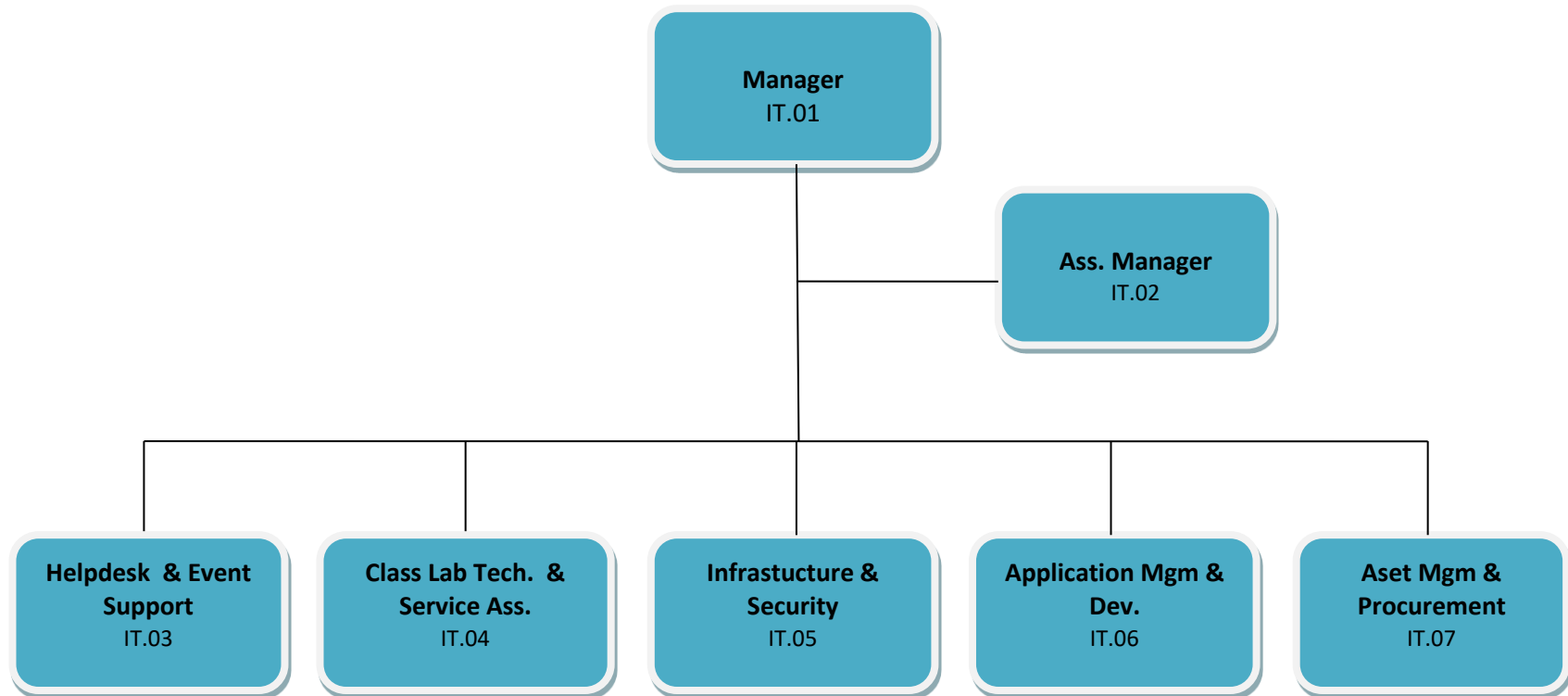
No	Item	Standard	Policies
Hardware			
1	PC Lab Multi Media & Audio Visual	Core I'5 + Vga Card + headset	Trade in setelah 5 thn
2	Pc Lab & User	Core I'5	Trade in setelah 5thn
3	Laptop	Core I'3 , HP / Toshiba	Trade in setelah 5 thn
4	Printer Laserjet	HP	
5	Printer Warna	Epson	
6	Monitor	LCD Samsung / LG	
Software			
7	Operating System	Windows 7 , Windows Server	Original
8	Standar	Ms Office , Antirus Avira	Original
9	Lab	Adobe Photo Shop , Adobe Premier , Coreldraw , Visual studio ,	Original
10	Lab	Netbean ,	Free

Table of Contents

- ITHB Application Architecture
- ITHB Infrastructure Architecture
- ITHB Hardware & Software Blueprint
- **ITHB Organization Blueprint**

IT Management Organization Blueprint - Structure

IT DEPARTEMENT



IT Management Organization Blueprint – Job Description

- IT Manager
- Helpdesk & Event Support
- Class & labs Staf
- Infrastructure & Security
- Application Management & Development

Detail terlampir

IT Management Organization Blueprint

System and Procedure

1. Penggunaan Komputer
2. Penggunaan Email
3. Penggunaan DMS ALFRESCO
4. User Id dan Password
5. Akses Internet
6. Penanganan Helpdesk
7. SMS / Email Blast
8. Support Acara

Work Instruction

1. Pengecekan koneksi Internet , Intranet dan Wifi
2. Pemeliharaan Data dan Aplikasi
3. Kelas dan Lab Support
4. Pemeliharaan Aset IT
5. Pengelolaan Data Center dan Infrastruktur